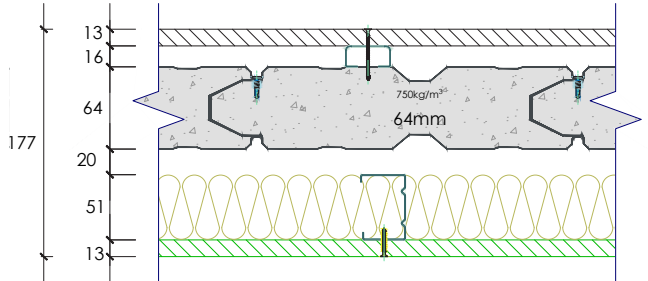


SYSTEM SP64006

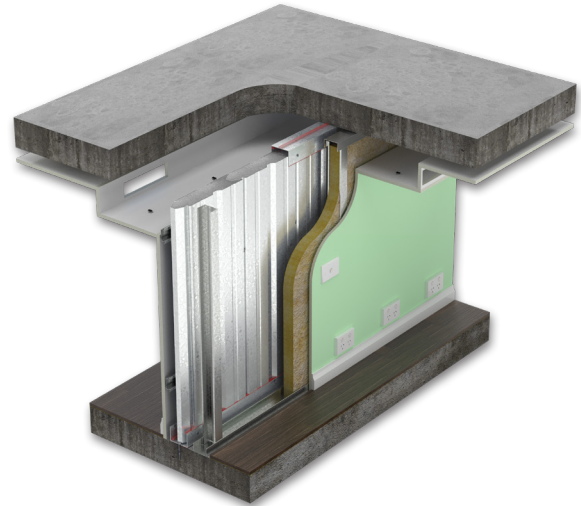
Report No.	Fire rating level	Rw	C	CTR	Net acoustic rating	Thickness	64
RMIT 12-124/PD	-/90/90	59	-2	-8	Rw+Ctr 51	177mm	

System Composition

- 13mm standard plasterboard
- 16mm steel batten
- 64mm Speedpanel® 750kg/m³ density
- 20mm air gap
- 51mm steel stud
- 50mm x 15kg/m³ glasswool insulation
- 13mm wet area plasterboard



FREQUENCY (Hz)	Rw 59 REF. CURVE (dB)	SOUND TRANSMISSION LOSS (dB)
80	-	29.1
100	40	36.6
125	43	38.8
160	46	38.6
200	49	41.7
250	52	47.4
315	55	55.0
400	58	60.0
500	59	63.7
630	60	67.8
800	61	71.7
1000	62	78.5
1250	63	≥78.6
1600	63	≥80.3
2000	63	≥79.9
2500	63	77.1
3150	63	80.1
4000	-	85.5
5000	-	≥85.0



This system incorporates these items on each side of the wall:

- 3 GPO
- 1 light switch
- 2 down lights
- Bulkhead with 150 x 100mm opening

