

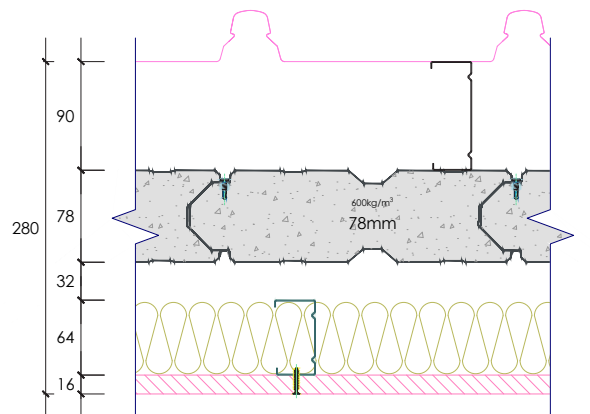
SYSTEM SP78106

Report No.	Fire rating level	Rw	C	CTR	Net acoustic rating	Thickness
RMIT 121i/08-222/JW	-/120/120	71	-4	-11	Rw+Ctr 60	280mm

78

System Composition

- Kingclip Roofing (0.48 BMT) with Fletchers Permastop
- 55mm insulation
- 90mm steel stud
- 78mm Speedpanel 600kg/m³ density
- 32mm air gap
- 100mm 20kg/m³ insulation
- 64mm steel stud
- 16mm fire-rated plasterboard



FREQUENCY (Hz)	Rw 71 REF. CURVE (dB)	SOUND TRANSMISSION LOSS (dB)
80	-	-
100	52	40.9
125	55	48.6
160	58	54.1
200	61	58.0
250	64	63.7
315	67	65.0
400	70	71.8
500	71	76.1
630	72	78.0
800	73	79.6
1000	74	78.2
1250	75	78.6
1600	75	79.8
2000	75	78.0
2500	75	80.4
3150	75	84.2
4000	-	85.1
5000	-	86.9

