

SPEEDPANEL OFFICE TOWERS



Speedpanel has been involved in some of Australia's largest Office Towers. From Collins Square Melbourne to 1 William St. Brisbane. The speed and ease of Speedpanel installation has proven to provide major time & cost savings when compared with traditional plasterboard partitions & non-load bearing blockwork. We work closely with our clients from design right through to delivery & installation. Our service promises to make your life easier.

- Reduce the need for unnecessary scaffolding that is often required during the installation of blockwork.
- Scissor Stairs, Shafts and Risers are Speedpanel's most common solution on high-rise building projects. No other product can rival our superior installation speed and performance efficiency when it comes to our ability to stack panels to unlimited heights.
- By using Speedpanel within stairs, shafts and risers you can completely eliminate structural elements such as lintels.
- Speedpanel used in plant areas is a great way to quickly install walls that require multiple penetrations (up to 4m²) as the cutting can be done after the wall is completed without requiring extra reinforcement for services.
- Speedpanel can be supplied in a range of pre-painted steel options to the ease and speed of a pre-finished car park wall. Galvanised Speedpanel can be left as is or is easily paintable.



Save
Time



Improve
Performance



Save
Money

Speedpanel excels in Office Towers within the following areas:

Facade Substrate | Scissor Stairs & Shafts | Plant Rooms & Car Parks | Corridor Walls



1 William St. - Brisbane QLD

Benefits



Project Review 1:

Speedpanel was used throughout this project in the plant areas, shafts and risers. Showing prodigious versatility, Speedpanel was once again called upon to facilitate a solution around some problematic infill walls within the concrete structure of the building.

The lightweight tongue and groove panels also facilitated a top down construction methodology within a shaft.



50 Flinders St. - Adelaide SA

Benefits



Project Review 2:

Speedpanel was chosen for the car park wall areas, and also utilised within pre-fabricated crane-in service riser modules. The Speedpanel was made to length and attached to the steel frame in a factory off site, then craned into position. The ability to start and stop Speedpanel walls made for ease of connection once in place.



Box Hill ATO - Melbourne VIC

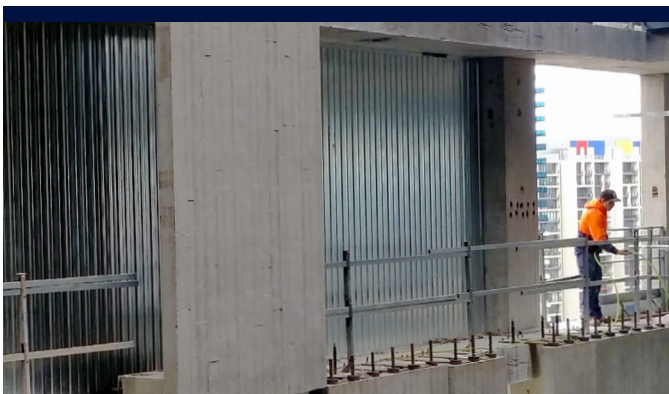
Benefits



Project Review 3:

Throughout the 6 storey carpark Speedpanel can be seen accommodating to sloping and steps in wall heights, curves and reflective finishes. The walls around the carpark also provided a weather resistant seal.

Made from 29.5% recycled materials the use of Speedpanel aided the Green Star energy rating of the project.



Collins Square - Melbourne VIC

Benefits



Project Review 4:

Collins Square targeted a 5-star Green Star design hence one of the reasons to choose Speedpanel. The builders used Speedpanel in the shaft and riser service areas and on external colour steel facade walls. Speedpanel boasts a wide array of certification around penetrations, ducts, pipes and cable trays. The speed of installation and ease of sign off assisted the overall build sequence.