



Save
Time



Improve
Performance



Save
Money



Speedpanel has been used in some of Australia's most iconic sporting stadiums. The speed and ease of Speedpanel installation has proven to provide major time & cost savings when compared with traditional plasterboard partitions & non-load bearing blockwork. We work closely with our clients from design right through to delivery & installation. Our service promises to make your life easier.

- Speedpanel's unique ability to span large distances lends itself to sports stadiums by reducing costs associated with unnecessary structural steel.
- Speedpanel used in plant areas is a great way to quickly install walls that require multiple penetrations (up to 4m²) as the cutting can be done after the wall is completed without requiring extra reinforcement. Speedpanel have tested and certified many products including electrical, plumbing and mechanical services
- Reduce the need for unnecessary scaffolding that is often required during the installation of blockwork
- Stairs, Shafts and Risers are Speedpanel's most common solution for large-scale projects. No other product can rival our superior installation speed and performance efficiency when it comes to our ability to stack panels to unlimited heights.
- Speedpanel can be supplied in any colour from the coloured steel / colourbond range adding to the ease and speed of a pre-finished car park wall. Galvanised Speedpanel is also easily paintable.
- The ability to construct Speedpanel systems from one side, and Speedpanel's capacity to be engineered to hold large weights make it ideal for facade substrates.

Speedpanel excels in sports stadiums within the following areas:

External Facade Substrate | Stairs & Shafts | Plant Rooms & Car Parks | Tall Walls



Rectangular Stadium (AAMI Park) - Melbourne VIC

Benefits



Project Review 1:

Speedpanel was utilised throughout the shaft and plant room areas of this award winning stadium. Speedpanel's extensive certification around ducts, pipes, cable trays and service penetrations is confidence for any builder. Walls can be put in place and service penetrations can be cut at a later date with no added structural steel required. This becomes a major programme advantage in reducing the risk of re-work caused from holes being cut in the wrong position.



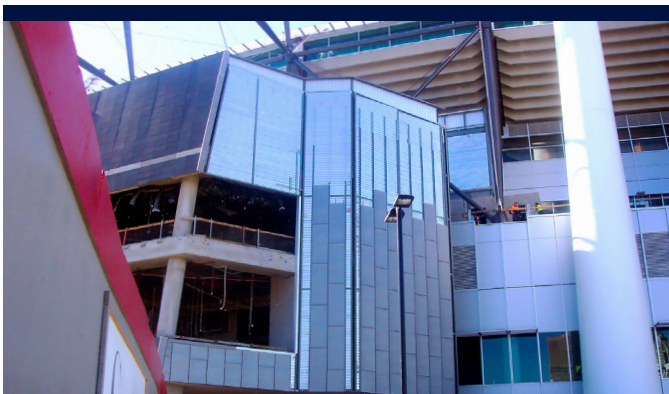
Melbourne Park (HiSense Arena) - Melbourne VIC

Benefits



Project Review 2:

Speedpanel is an excellent choice for the builder looking to create a weather resistant facade substrate that performs exceptionally in blocking out sound. These advantages combined with the simplicity of the click together panels provided a fast and easy to install system that met the high performance acoustic requirements of a stadium that would be used for concerts and other loud entertainment functions.



Melbourne Cricket Ground (MCG) - Melbourne VIC

Benefits



Project Review 3:

Grocon completed the redevelopment of the MCG back in 2006 and used Speedpanel for all the externally clad walls. Speedpanel packs arrive on site cut to length aiding in the speed in which installers are able to continuously stack the horizontal panels. An external weight of 30kg/m² can be attached to a Speedpanel wall which means it's not only great for facade substrates but also plant rooms where large electrical cabinets and cable trays are often mounted directly to the Speedpanel.



Whitten Oval Sports Stadium - Melbourne VIC

Benefits



Project Review 4:

This four court stadium build initially had plans for large concrete footings which were removed due to the inclusion of Speedpanel and replacement of concrete tilt panels. The lightweight nature of Speedpanel meant the builder only used footings under the main steel structure of the stadium. Using Colorbond to produce the custom aesthetic required saved time on finishes and the builder was able to use his own labour to easily install the panels as opposed to hiring seasoned Speedpanel installers.