

Speedpanel Acoustic Systems



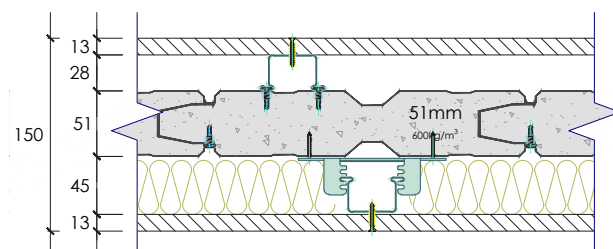
51mm | SYSTEM SP51035

SYSTEM SP51035

| Test No. | Fire rating level | Rw | C | CTR | Net acoustic rating | Thickness | 51 |
|-------------|-------------------|----|----|-----|---------------------|-----------|----|
| RMIT 15-129 | -/60/60 | 52 | -5 | -12 | Rw+Ctr 40 | 150mm | |

System Composition

- 13mm standard plasterboard
- 28mm furring channel
- 51mm Speedpanel® 600kg/m³ density
- 28mm furring channel on clips to create 45mm cavity
- 50mm x 14kg/m³ glasswool insulation
- 13mm standard plasterboard



| FREQUENCY (Hz) | Rw 52 REF. CURVE (dB) | SOUND TRANSMISSION LOSS (dB) |
|----------------|-----------------------|------------------------------|
| 80 | - | 21.7 |
| 100 | 33 | 22.5 |
| 125 | 36 | 24.8 |
| 160 | 39 | 31.7 |
| 200 | 42 | 39.8 |
| 250 | 45 | 44.5 |
| 315 | 48 | 49.8 |
| 400 | 51 | 54.3 |
| 500 | 52 | 58.3 |
| 630 | 53 | 59.1 |
| 800 | 54 | 60.3 |
| 1000 | 55 | 58.9 |
| 1250 | 56 | 61.1 |
| 1600 | 56 | 61.4 |
| 2000 | 56 | 59.9 |
| 2500 | 56 | 56.2 |
| 3150 | 56 | 56.0 |
| 4000 | - | 59.7 |
| 5000 | - | 63.2 |

