

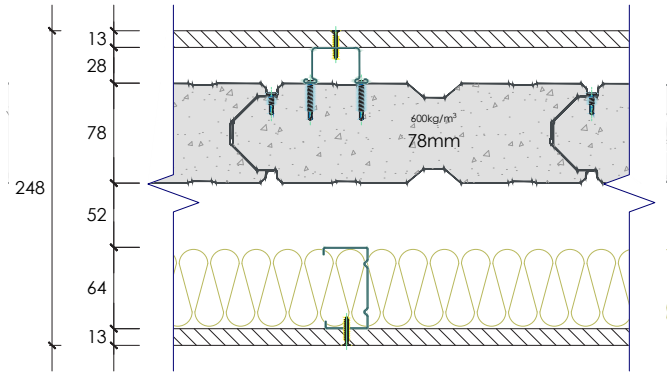
SYSTEM SP78117

| Report No. | Fire rating level | Rw | C | CTR | Net acoustic rating | Thickness |
|----------------------|-------------------|----|----|-----|---------------------|-----------|
| RMIT 121i/09-090B/PD | -/120/120 | 60 | -3 | -10 | Rw+Ctr 50 | 248mm |

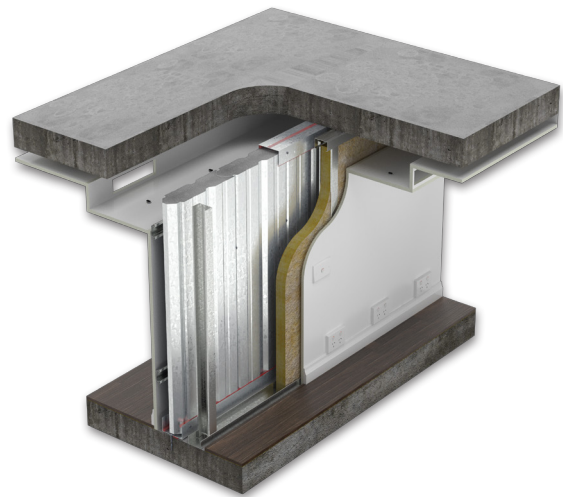
78

System Composition

- 13mm standard plasterboard
- 28mm furring channel
- 78mm Speedpanel® 600kg/m³ density
- 52mm air gap
- 64mm steel stud
- 50mm x 14kg/m³ glasswool insulation
- 13mm standard plasterboard



| FREQUENCY (Hz) | Rw 60 REF. CURVE (dB) | SOUND TRANSMISSION LOSS (dB) |
|----------------|-----------------------|------------------------------|
| 100 | 41 | 32.9 |
| 125 | 44 | 37.8 |
| 160 | 47 | 40.7 |
| 200 | 50 | 45.0 |
| 250 | 53 | 50.5 |
| 315 | 56 | 54.3 |
| 400 | 59 | 59.2 |
| 500 | 60 | 62.4 |
| 630 | 61 | 67.4 |
| 800 | 62 | 74.2 |
| 1000 | 63 | 76.2 |
| 1250 | 64 | 78.9 |
| 1600 | 64 | 80.0 |
| 2000 | 64 | 79.8 |
| 2500 | 64 | 78.0 |
| 3150 | 64 | 79.8 |
| 4000 | - | 83.0 |
| 5000 | - | 82.9 |



This system incorporates these items on each side of the wall:

- 3 GPO
- 1 light switch
- 2 down lights
- Bulkhead with 150 x 100mm opening

