

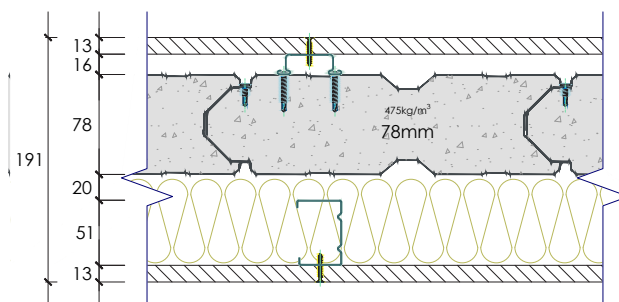
SYSTEM SP78142

| Report No. | Fire rating level | Rw | C | CTR | Net acoustic rating | Thickness |
|----------------|-------------------|----|----|-----|---------------------|-----------|
| RMIT 12-103/PD | -/120/120 | 60 | -4 | -10 | Rw+Ctr 50 | 191mm |

78

System Composition

- 13mm standard plasterboard
- 16mm furring channel
- 78mm Speedpanel® 475kg/m³ density
- 20mm gap
- 51mm steel stud
- 90mm x 22kg/m³ glasswool insulation
- 13mm standard plasterboard



| FREQUENCY (Hz) | Rw 60 REF. CURVE (dB) | SOUND TRANSMISSION LOSS (dB) |
|----------------|-----------------------|------------------------------|
| 80 | - | 29.7 |
| 100 | 41 | 34.6 |
| 125 | 44 | 36.5 |
| 160 | 47 | 38.7 |
| 200 | 50 | 44.4 |
| 250 | 53 | 50.1 |
| 315 | 56 | 55.9 |
| 400 | 59 | 61.9 |
| 500 | 60 | 65.6 |
| 630 | 61 | 72.0 |
| 800 | 62 | 75.3 |
| 1000 | 63 | 73.6 |
| 1250 | 64 | 70.0 |
| 1600 | 64 | 66.3 |
| 2000 | 64 | 66.1 |
| 2500 | 64 | 69.0 |
| 3150 | 64 | 72.3 |
| 4000 | - | 73.4 |
| 5000 | - | 71.7 |

