

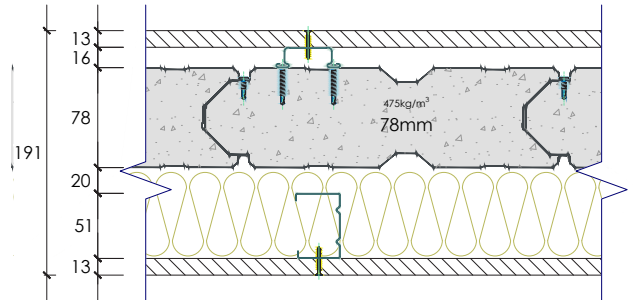
SYSTEM SP78143

| Report No. | Fire rating level | Rw | C | CTR | Net acoustic rating | Thickness |
|----------------|-------------------|----|----|-----|---------------------|-----------|
| RMIT 12-104/PD | -/120/120 | 59 | -3 | -9 | Rw+Ctr 50 | 191mm |

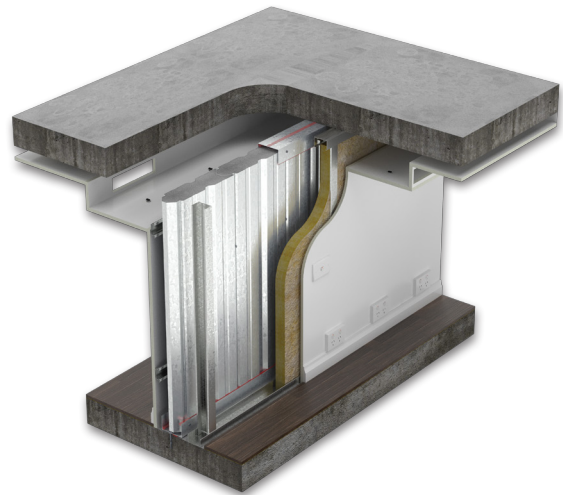
78

System Composition

- 13mm standard plasterboard
- 16mm furring channel
- 78mm Speedpanel® 475kg/m³ density
- 20mm gap
- 51mm steel stud
- 22kg/m³ x 90mm glasswool insulation
- 13mm standard plasterboard



| FREQUENCY (Hz) | Rw59 REF. CURVE (dB) | SOUND TRANSMISSION LOSS (dB) |
|----------------|----------------------|------------------------------|
| 80 | - | 27.8 |
| 100 | 40 | 33.5 |
| 125 | 43 | 37.6 |
| 160 | 46 | 38.9 |
| 200 | 49 | 43.3 |
| 250 | 52 | 49.2 |
| 315 | 55 | 55.0 |
| 400 | 58 | 60.9 |
| 500 | 59 | 64.9 |
| 630 | 60 | 70.6 |
| 800 | 61 | 73.8 |
| 1000 | 62 | 73.3 |
| 1250 | 63 | 69.8 |
| 1600 | 63 | 67.2 |
| 2000 | 63 | 69.4 |
| 2500 | 63 | 70.6 |
| 3150 | 63 | 72.7 |
| 4000 | - | 72.7 |
| 5000 | - | 70.9 |



This system incorporates these items on each side of the wall:

- 3 GPO
- 1 light switch
- 2 down lights
- Bulkhead with 150 x 100mm opening

