

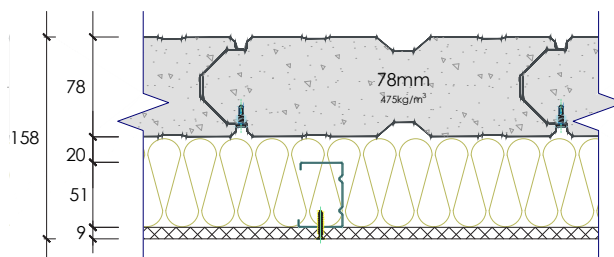
## SYSTEM SP78147

| Report No.     | Fire rating level | Rw | C  | CTR | Net acoustic rating | Thickness |
|----------------|-------------------|----|----|-----|---------------------|-----------|
| RMIT 12-113/PD | -/120/120         | 65 | -3 | -9  | Rw+Ctr 56           | 158mm     |

78

### System Composition

- 78mm Speedpanel® 475kg/m<sup>3</sup> density
- 20mm gap
- 51mm steel stud
- 90mm x 22kg/m<sup>3</sup> polyester insulation
- 9mm FC sheet



| FREQUENCY (Hz) | Rw 65 REF. CURVE (dB) | SOUND TRANSMISSION LOSS (dB) |
|----------------|-----------------------|------------------------------|
| 80             | -                     | 31.0                         |
| 100            | 46                    | 39.2                         |
| 125            | 49                    | 42.6                         |
| 160            | 52                    | 46.8                         |
| 200            | 55                    | 50.9                         |
| 250            | 58                    | 54.7                         |
| 315            | 61                    | 58.5                         |
| 400            | 64                    | 62.4                         |
| 500            | 65                    | 65.8                         |
| 630            | 66                    | 70.5                         |
| 800            | 67                    | 73.5                         |
| 1000           | 68                    | 76.8                         |
| 1250           | 69                    | 76.2                         |
| 1600           | 69                    | 74.6                         |
| 2000           | 69                    | 74.2                         |
| 2500           | 69                    | 73.6                         |
| 3150           | 69                    | 74.2                         |
| 4000           | -                     | 73.9                         |
| 5000           | -                     | 71.6                         |

