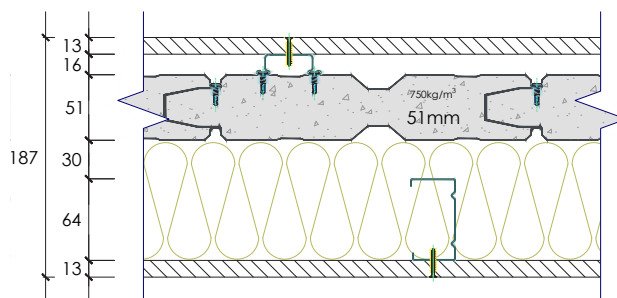


## SYSTEM SP51002

| Report No.          | Fire rating level | Rw | C  | CTR | Net acoustic rating | Thickness | 51 |
|---------------------|-------------------|----|----|-----|---------------------|-----------|----|
| RMIT 121i/11-121/PD | -/60/60           | 57 | -3 | -7  | Rw+Ctr 50           | 187mm     |    |

### System Composition

- 13mm standard plasterboard
- 16mm furring channel
- 51mm Speedpanel® 750kg/m<sup>3</sup> density
- 30mm gap
- 64mm steel stud
- 100mm x 32kg/m<sup>3</sup> polyester insulation
- 13mm standard plasterboard



| FREQUENCY (Hz) | Rw 57 REF. CURVE (dB) | SOUND TRANSMISSION LOSS (dB) |
|----------------|-----------------------|------------------------------|
| 80             | -                     | 33.4                         |
| 100            | 38                    | 35.0                         |
| 125            | 41                    | 39.0                         |
| 160            | 44                    | 39.1                         |
| 200            | 47                    | 44.1                         |
| 250            | 50                    | 49.3                         |
| 315            | 53                    | 52.3                         |
| 400            | 56                    | 56.5                         |
| 500            | 57                    | 57.5                         |
| 630            | 58                    | 60.0                         |
| 800            | 59                    | 62.1                         |
| 1000           | 60                    | 62.9                         |
| 1250           | 61                    | 63.9                         |
| 1600           | 61                    | 63.6                         |
| 2000           | 61                    | 61.8                         |
| 2500           | 61                    | 54.3                         |
| 3150           | 61                    | 50.5                         |
| 4000           | -                     | 53.5                         |
| 5000           | -                     | 57.4                         |

