

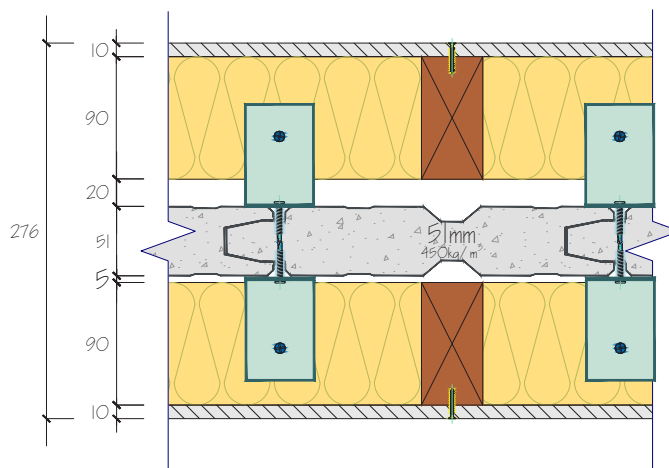
## SYSTEM SP51014

Report No.	Fire rating level	Rw	C	CTR	Net acoustic rating	Thickness
RMIT 15-003/PD	-/60/60	65	-7	-15	Rw+Ctr 50	276mm

51

### System Composition

- 10mm standard plasterboard
- 90mm timber frame
- 100mm x 32kg/m<sup>3</sup> glasswool infill
- 20mm gap
- 51mm Speedpanel® 450kg/m<sup>3</sup> density
- 5mm gap
- 90mm timber frame
- 10mm standard plasterboard



FREQUENCY (Hz)	Rw 65 REF. CURVE (dB)	SOUND TRANSMISSION LOSS (dB)
80	-	21.6
100	46	30.7
125	49	37.6
160	52	52.2
200	55	56.5
250	58	56.5
315	61	61.8
400	64	66.6
500	65	69.1
630	66	72.0
800	69	73.7
1000	68	75.1
1250	69	76.9
1600	69	75.0
2000	69	76.8
2500	69	80.4
3150	69	81.0
4000	-	78.0
5000	-	82.6

