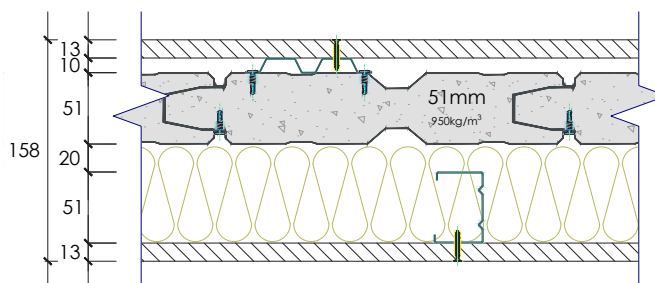


SYSTEM SP51019

Report No.	Fire rating level	Rw	C	CTR	Net acoustic rating	Thickness	51
RMIT 15-013/PD	-/60/60	59	-3	-9	Rw+Ctr 50	158mm	

System Composition

- 13mm standard plasterboard
- 10mm steel batten
- 51mm Speedpanel® 950kg/m³ density
- 20mm gap
- 51mm steel stud
- 75mm x 24kg/m³ glasswool insulation
- 13mm standard plasterboard



FREQUENCY (Hz)	Rw 59 REF. CURVE (dB)	SOUND TRANSMISSION LOSS (dB)
80	-	28.0
100	40	33.4
125	43	38.1
160	46	40.0
200	49	45.3
250	52	48.8
315	55	54.5
400	58	57.8
500	59	60.2
630	60	60.3
800	61	62.7
1000	62	62.2
1250	63	63.5
1600	63	63.5
2000	63	63.0
2500	63	62.4
3150	63	60.5
4000	-	63.1
5000	-	66.5

