

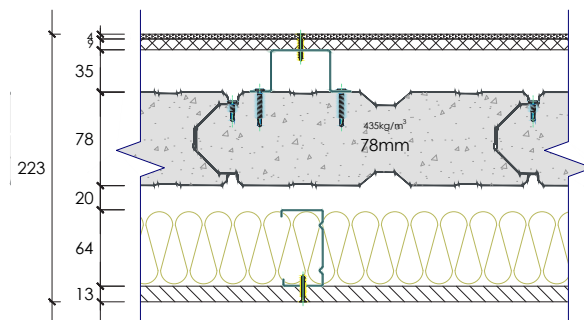
## SYSTEM SP78081

Report No.	Fire rating level	Rw	C	CTR	Net acoustic rating	Thickness
RMIT 121i/06-107/JW	-/120/120	62	-7	-15	Rw+Ctr 47	223mm

78

### System Composition

- Dulux Acra-Tex 955 Acra-Shield
- Joints Dulux-Tex Textured Coating 951 Tuscany Coarse
- 4mm Dulux Acra-Tex Flush Base 500/13 Fast Coat
- 9mm Comtex Facade System - James Harding
- 35mm top hat section
- 78mm Speedpanel® 435kg/m<sup>3</sup> density
- 20mm air gap
- 64mm steel stud
- 65mm Autex insulation
- 13mm standard plasterboard



FREQUENCY (Hz)	Rw 62 REF. CURVE (dB)	SOUND TRANSMISSION LOSS (dB)
100	43	27.2
125	46	37.8
160	49	43.8
200	52	50.9
250	55	53.8
315	58	62.0
400	61	68.0
500	62	75.7
630	63	80.4
800	64	86.6
1000	65	≥85.1
1250	66	≥83.7
1600	66	≥81.8
2000	66	≥82.9
2500	66	≥80.1
3150	66	≥80.0
4000	-	≥80.2
5000	-	≥75.8

