

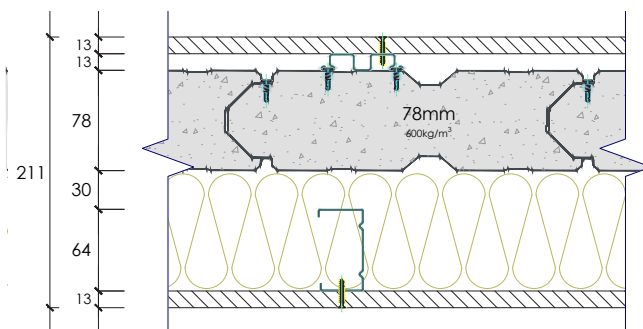
SYSTEM SP78137

Report No.	Fire rating level	Rw	C	CTR	Net acoustic rating	Thickness
RMIT 121i/11-114/PD	-/120/120	62	-2	-9	Rw+Ctr 53	211mm

78

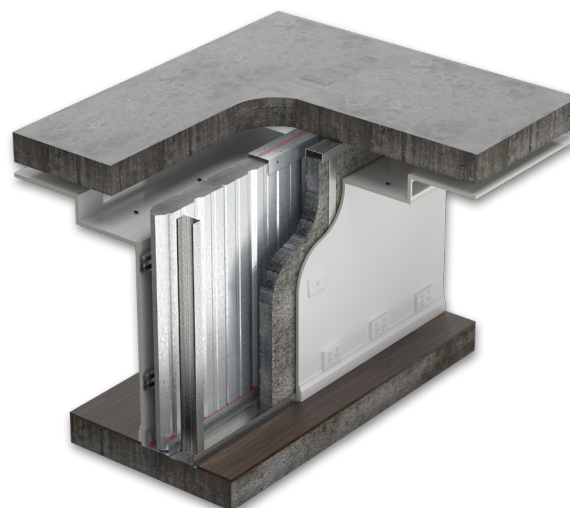
System Composition

- 13mm standard plasterboard
- 13mm furring channel
- 78mm Speedpanel® 600kg/m³ density
- 30mm gap
- 64mm steel stud
- 100mm x 32kg/m³ polyester insulation
- 13mm standard plasterboard



FREQUENCY (Hz)	Rw 62 REF. CURVE (dB)	SOUND TRANSMISSION LOSS (dB)
80	-	32.3
100	43	36.6
125	46	39.4
160	49	43.6
200	52	47.4
250	55	51.5
315	58	56.7
400	61	61.9
500	62	64.8
630	63	70.5
800	64	76.6
1000	65	81.0
1250	66	84.5
1600	66	85.4*
2000	66	85.8*
2500	66	84.5*
3150	66	83.7*
4000	-	82.9*
5000	-	80.4*

*Results marked have been affected by background noise. Actual sound transmission loss values of these frequencies is expected to be higher.



This system incorporates these items on each side of the wall:

- 3 GPO
- 1 light switch
- 2 down lights
- Bulkhead with 150 x 100mm opening

